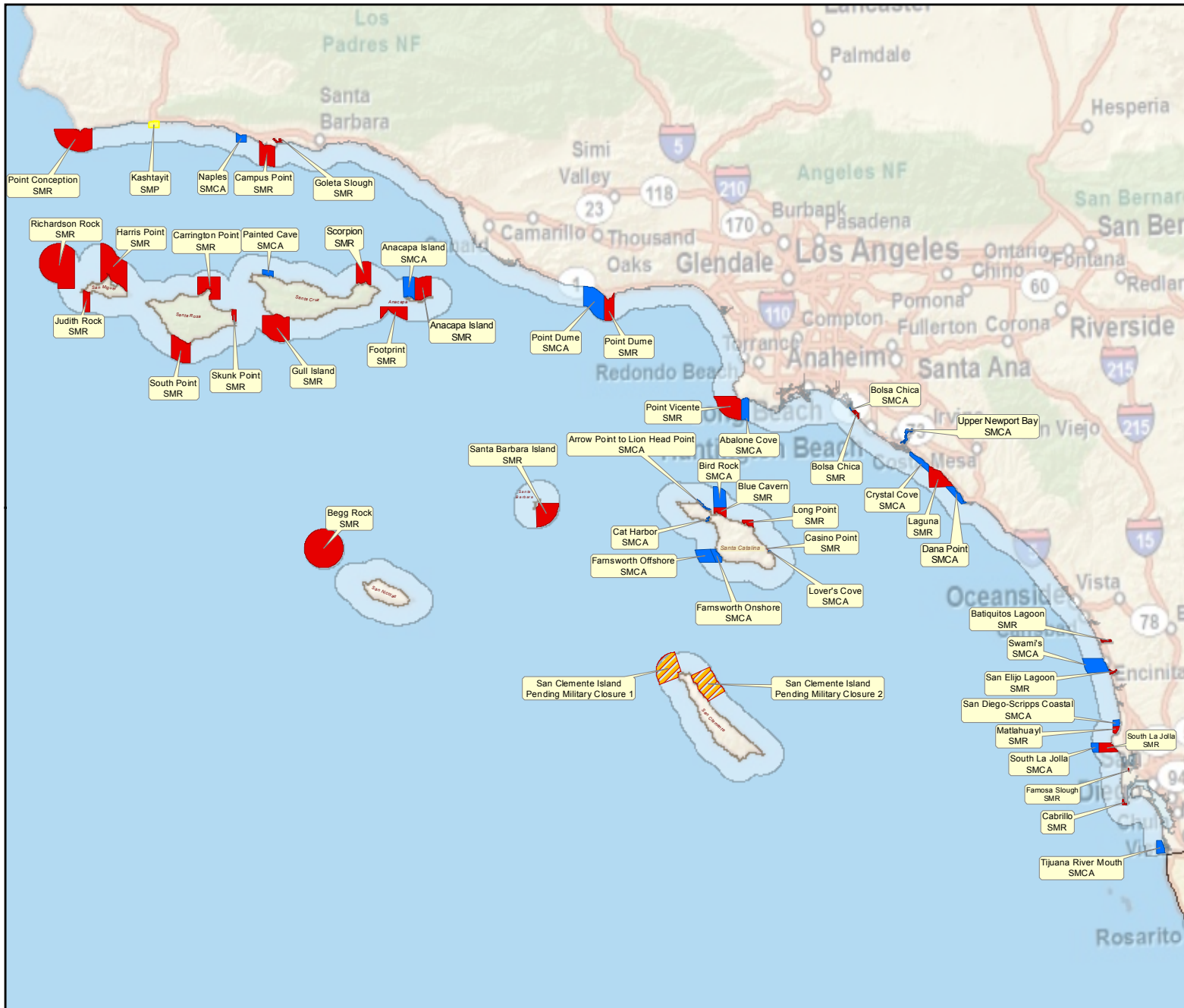


MLPA South Coast Study Region:



California Marine Life Protection Act (MLPA) Initiative

MLPA South Coast Integrated Preferred Alternative (IPA) MPA Proposal

Legend

- Pending Military Closure
- Proposed State Marine Conservation Area (SMCA)
- Proposed State Marine Park (SMP)
- Proposed State Marine Reserve (SMR)
- South Coast Study Region Boundary

This marine protected area (MPA) proposal was unanimously adopted on November 10, 2009 by the MLPA Blue Ribbon Task Force (BRTF) as the MLPA South Coast Integrated Preferred Alternative (IPA) MPA Proposal to be recommended to the California Fish and Game Commission (CFGC).

The IPA integrates elements from three MPA proposals developed by the MLPA South Coast Regional Stakeholder Group (SCSRG); SCSRG MPA proposals 1, 2 and 3 will also be forwarded to the CFGC for consideration. Further information about each MPA proposal is available on the MLPA website and in MarineMap.



For more detailed maps please visit:
www.marinemap.org/marinemap

Projection Information:

Name: NAD 1983 California Teale Albers
 Projection: Albers
 Datum: North American 1983



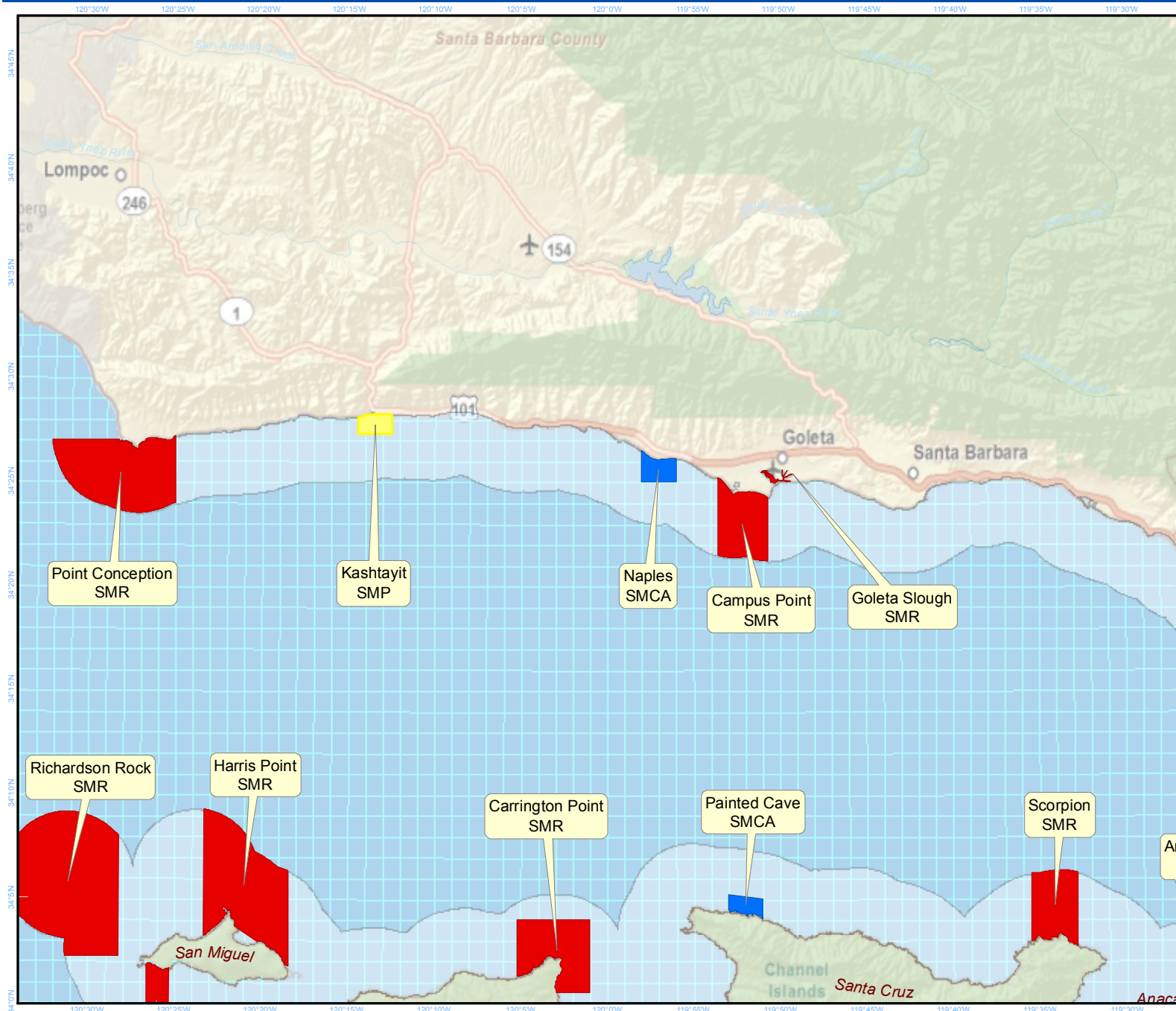
0 5 10 20 Miles
 1:1,650,000

Compiled on: 11/17/2009

Created By:
 Marine Map, Cartographic Division UCSB

MLPA South Coast Study Region:

Subregion 1 - Government Point to Rincon Point



California Marine Life Protection Act (MLPA) Initiative

MLPA South Coast Integrated Preferred Alternative (IPA) MPA Proposal

Legend

- Pending Military Closure
- Proposed State Marine Conservation Area (SMCA)
- Proposed State Marine Park (SMP)
- Proposed State Marine Reserve (SMR)
- South Coast Study Region Boundary

This marine protected area (MPA) proposal was unanimously adopted on November 10, 2009 by the MLPA Blue Ribbon Task Force (BRTF) as the MLPA South Coast Integrated Preferred Alternative (IPA) MPA Proposal to be recommended to the California Fish and Game Commission (CFGC).

The IPA integrates elements from three MPA proposals developed by the MLPA South Coast Regional Stakeholder Group (SCSRG); SCSR MPA proposals 1, 2 and 3 will also be forwarded to the CFGC for consideration. Further information about each MPA proposal is available on the MLPA website and in MarineMap.



For more detailed maps please visit:
www.marinemap.org/marinemap

Projection Information:

Name: NAD 1983 California Teale Albers
 Projection: Albers
 Datum: North American 1983



0 3 6 12 Miles

1:500,000

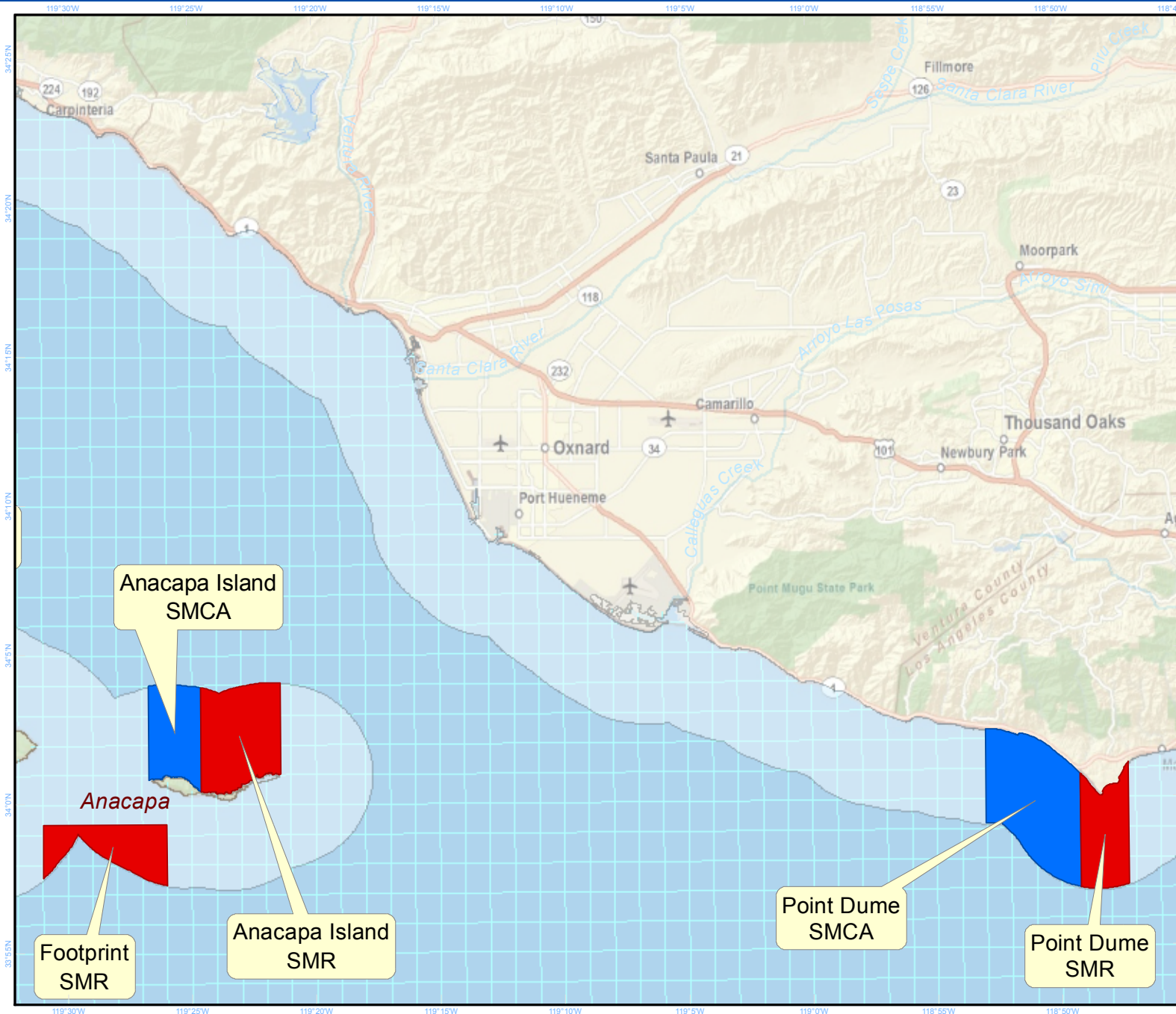


Compiled on: 11/16/2009

Created By:
 Marine Map, Cartographic Division UCSB

MLPA South Coast Study Region:

Subregion 2 - Rincon Point to Point Dume



California Marine Life Protection Act (MLPA) Initiative

MLPA South Coast Integrated Preferred Alternative (IPA) MPA Proposal

Legend

- Pending Military Closure
- Proposed State Marine Conservation Area (SMCA)
- Proposed State Marine Park (SMP)
- Proposed State Marine Reserve (SMR)
- South Coast Study Region Boundary

This marine protected area (MPA) proposal was unanimously adopted on November 10, 2009 by the MLPA Blue Ribbon Task Force (BRTF) as the MLPA South Coast Integrated Preferred Alternative (IPA) MPA Proposal to be recommended to the California Fish and Game Commission (CFGC).

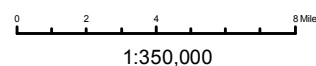
The IPA integrates elements from three MPA proposals developed by the MLPA South Coast Regional Stakeholder Group (SCSRG); SCSRSG MPA proposals 1, 2 and 3 will also be forwarded to the CFGC for consideration. Further information about each MPA proposal is available on the MLPA website and in MarineMap.



For more detailed maps please visit:
www.marinemap.org/marinemap

Projection Information:

Name: NAD 1983 California Teale Albers
 Projection: Albers
 Datum: North American 1983

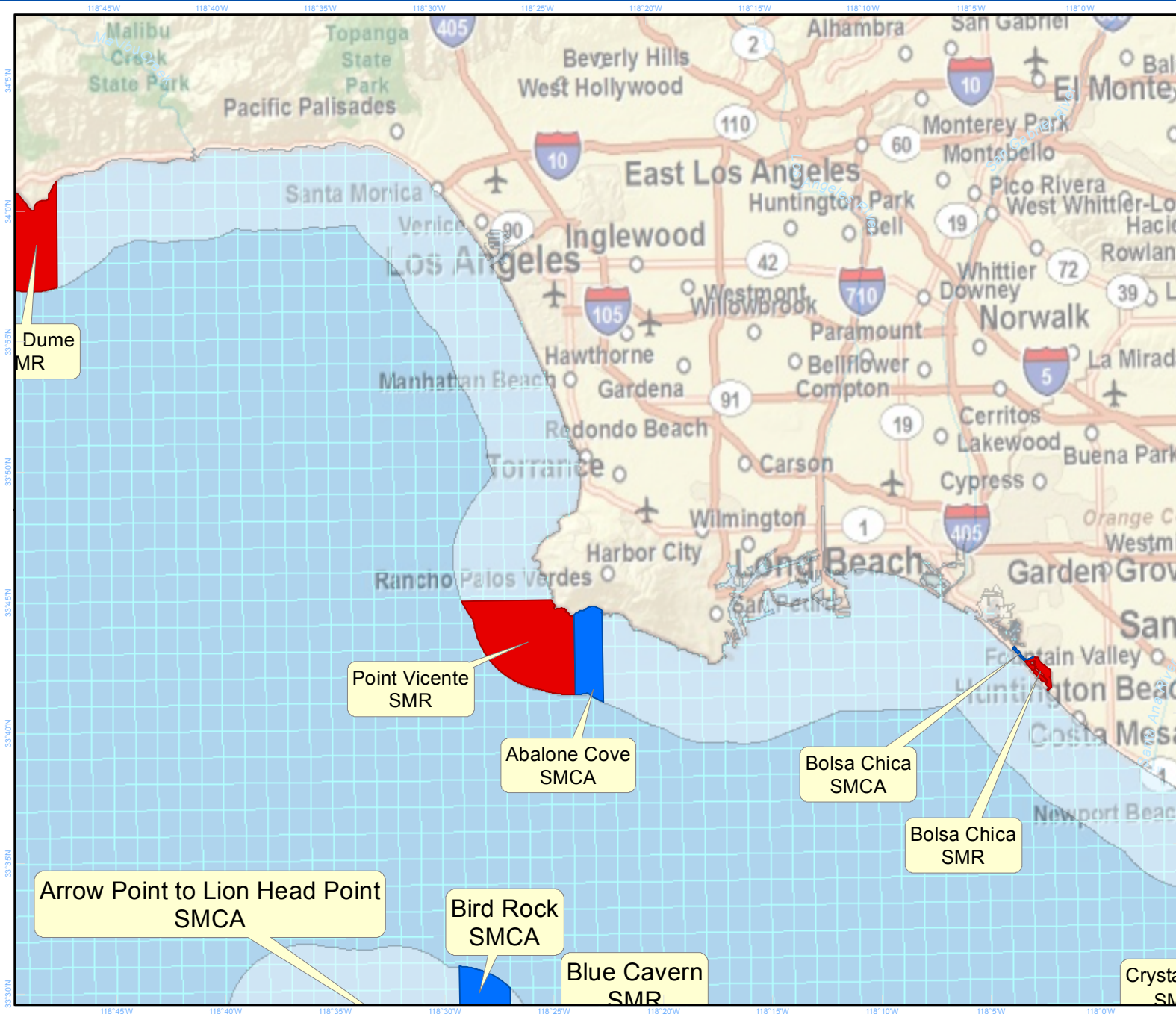


Compiled on: 11/16/2009

Created By:
 Marine Map, Cartographic Division UCSB

MLPA South Coast Study Region:

Subregion 3 - Point Dume to Newport Beach



California Marine Life Protection Act (MLPA) Initiative

MLPA South Coast Integrated Preferred Alternative (IPA) MPA Proposal

Legend

- Pending Military Closure
- Proposed State Marine Conservation Area (SMCA)
- Proposed State Marine Park (SMP)
- Proposed State Marine Reserve (SMR)
- South Coast Study Region Boundary

This marine protected area (MPA) proposal was unanimously adopted on November 10, 2009 by the MLPA Blue Ribbon Task Force (BRTF) as the MLPA South Coast Integrated Preferred Alternative (IPA) MPA Proposal to be recommended to the California Fish and Game Commission (CFG).

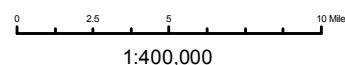
The IPA integrates elements from three MPA proposals developed by the MLPA South Coast Regional Stakeholder Group (SCSRG); SCSR MPA proposals 1, 2 and 3 will also be forwarded to the CFGC for consideration. Further information about each MPA proposal is available on the MLPA website and in MarineMap.



For more detailed maps please visit:
www.marinemap.org/marinemap

Projection Information:

Name: NAD 1983 California Teale Albers
Projection: Albers
Datum: North American 1983



Compiled on: 11/17/2009

Created By:
Marine Map, Cartographic Division UCSB

MLPA South Coast Study Region:

Subregion 4 - Newport Beach to Agua Hedionda



California Marine Life Protection Act (MLPA) Initiative

MLPA South Coast Integrated Preferred Alternative (IPA) MPA Proposal

Legend

- Pending Military Closure
- Proposed State Marine Conservation Area (SMCA)
- Proposed State Marine Park (SMP)
- Proposed State Marine Reserve (SMR)
- South Coast Study Region Boundary

This marine protected area (MPA) proposal was unanimously adopted on November 10, 2009 by the MLPA Blue Ribbon Task Force (BRTF) as the MLPA South Coast Integrated Preferred Alternative (IPA) MPA Proposal to be recommended to the California Fish and Game Commission (CFGC).

The IPA integrates elements from three MPA proposals developed by the MLPA South Coast Regional Stakeholder Group (SCSRG); SCSRSG MPA proposals 1, 2 and 3 will also be forwarded to the CFGC for consideration. Further information about each MPA proposal is available on the MLPA website and in MarineMap.



For more detailed maps please visit:
www.marinemap.org/marinemap

Projection Information:

Name: NAD 1983 California Teale Albers
 Projection: Albers
 Datum: North American 1983



0 2 4 8 Miles
 1:350,000



Compiled on: 11/16/2009

Created By:
 Marine Map, Cartographic Division UCSB

MLPA South Coast Study Region:

Subregion 5 - Agua Hedionda to California / Mexico Border



California Marine Life Protection Act (MLPA) Initiative

MLPA South Coast Integrated Preferred Alternative (IPA) MPA Proposal

Legend

- Pending Military Closure
- Proposed State Marine Conservation Area (SMCA)
- Proposed State Marine Park (SMP)
- Proposed State Marine Reserve (SMR)
- South Coast Study Region Boundary

This marine protected area (MPA) proposal was unanimously adopted on November 10, 2009 by the MLPA Blue Ribbon Task Force (BRTF) as the MLPA South Coast Integrated Preferred Alternative (IPA) MPA Proposal to be recommended to the California Fish and Game Commission (CFGC).

The IPA integrates elements from three MPA proposals developed by the MLPA South Coast Regional Stakeholder Group (SCSRG); SCSRSG MPA proposals 1, 2 and 3 will also be forwarded to the CFGC for consideration. Further information about each MPA proposal is available on the MLPA website and in MarineMap.



For more detailed maps please visit:
www.marinemap.org/marinemap

Projection Information:

Name: NAD 1983 California Teale Albers
 Projection: Albers
 Datum: North American 1983



0 2.5 5 10 Miles
 1:420,000

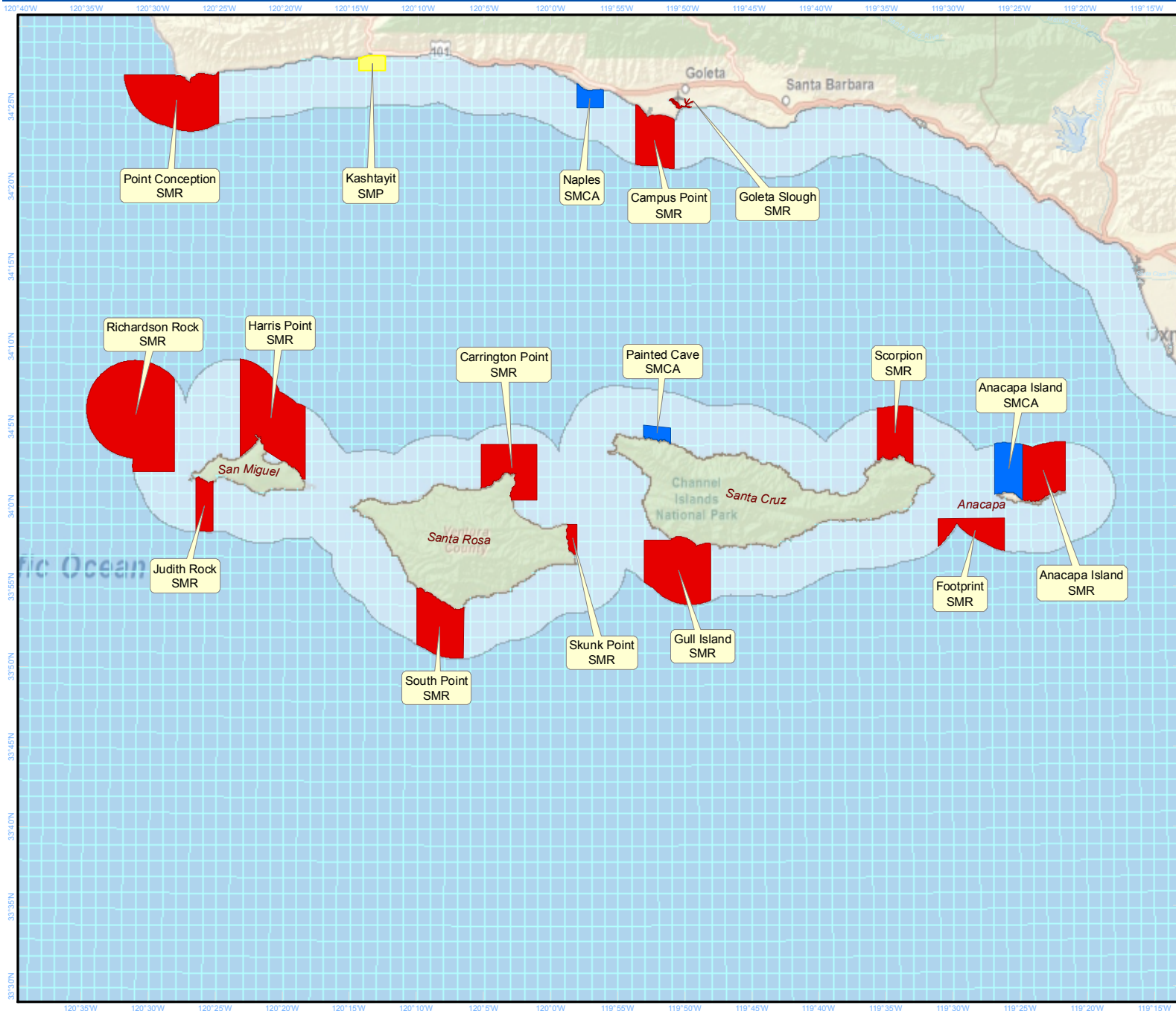


Compiled on: 11/16/2009

Created By:
 Marine Map, Cartographic Division UCSB

MLPA South Coast Study Region:

Subregion 6 - Northern Channel Islands



California Marine Life Protection Act (MLPA) Initiative

MLPA South Coast Integrated Preferred Alternative (IPA) MPA Proposal

Legend

- Pending Military Closure
- Proposed State Marine Conservation Area (SMCA)
- Proposed State Marine Park (SMP)
- Proposed State Marine Reserve (SMR)
- South Coast Study Region Boundary

This marine protected area (MPA) proposal was unanimously adopted on November 10, 2009 by the MLPA Blue Ribbon Task Force (BRTF) as the MLPA South Coast Integrated Preferred Alternative (IPA) MPA Proposal to be recommended to the California Fish and Game Commission (CFGC).

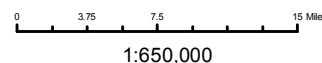
The IPA integrates elements from three MPA proposals developed by the MLPA South Coast Regional Stakeholder Group (SCSRG); SCSRSG MPA proposals 1, 2 and 3 will also be forwarded to the CFGC for consideration. Further information about each MPA proposal is available on the MLPA website and in MarineMap.



For more detailed maps please visit:
www.marinemap.org/marinemap

Projection Information:

Name: NAD 1983 California Teale Albers
 Projection: Albers
 Datum: North American 1983

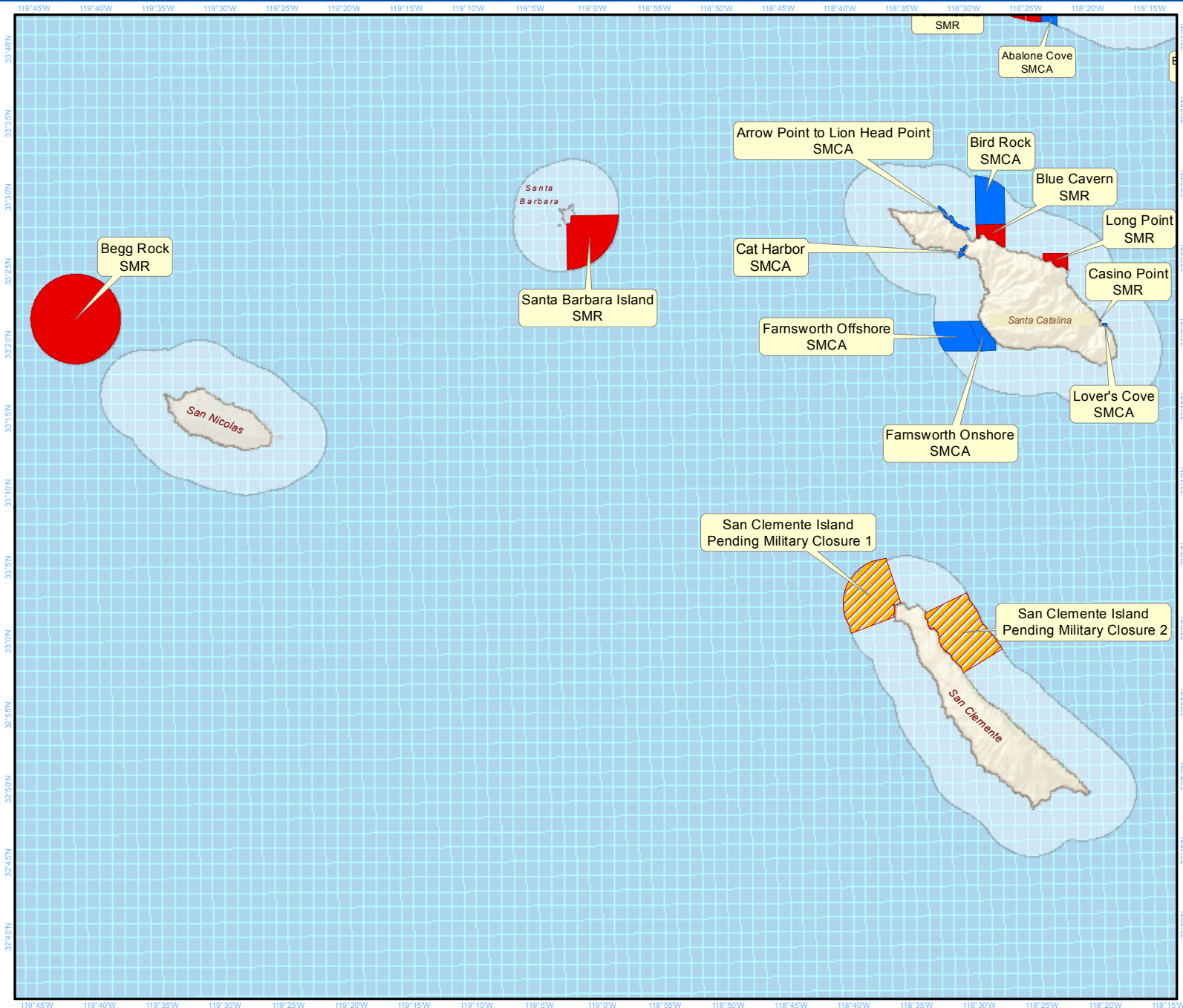


Compiled on: 11/16/2009

Created By:
 Marine Map, Cartographic Division UCSB

MLPA South Coast Study Region:

Subregion 7 - Southern Channel Islands



California Marine Life Protection Act (MLPA) Initiative

MLPA South Coast Integrated Preferred Alternative (IPA) MPA Proposal

Legend

- Pending Military Closure
- Proposed State Marine Conservation Area (SMCA)
- Proposed State Marine Park (SMP)
- Proposed State Marine Reserve (SMR)
- South Coast Study Region Boundary

This marine protected area (MPA) proposal was unanimously adopted on November 10, 2009 by the MLPA Blue Ribbon Task Force (BRTF) as the MLPA South Coast Integrated Preferred Alternative (IPA) MPA Proposal to be recommended to the California Fish and Game Commission (CFGC).

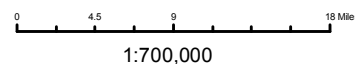
The IPA integrates elements from three MPA proposals developed by the MLPA South Coast Regional Stakeholder Group (SCSRG); SCSRG MPA proposals 1, 2 and 3 will also be forwarded to the CFGC for consideration. Further information about each MPA proposal is available on the MLPA website and in MarineMap.



For more detailed maps please visit:
www.marinemap.org/marinemap

Projection Information:

Name: NAD 1983 California Teale Albers
 Projection: Albers
 Datum: North American 1983



Compiled on: 11/17/2009

Created By:
 Marine Map, Cartographic Division UCSB